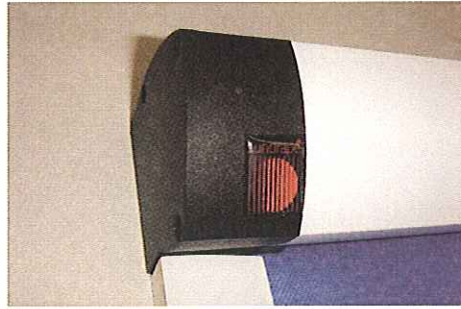


UPS & DOWNS NEWS

svensson
markspelle

DESIGN MEETS INNOVATIVE TECHNOLOGY

Designers, Architects, Decorators can reduce energy requirements for their clients by up to 41% by reducing summer cooling and winter heating costs. The idea has come from developments in the greenhouse industry. This technology is now available to architects and decorators in a stylish range of sophisticated blind fabrics. The fabrics have been developed to screen and control light and heat which produce environmentally friendly solutions.



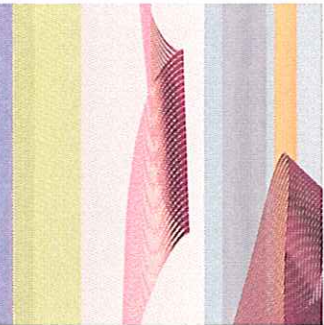
Murray Smith of **Sundrape** is launching their Quadro Cassette (available in 3 sizes) **Quadro S (small) Quadro M (medium) Quadro L (large).**

With **Quadro S** we offer the possibility to use this system also for very small measurements and **Quadro M** can be used up to 2m width. The larger **Quadro L** is fully motorised using 24 volt & 230 volt tubular motors. All sizes, all operation possibilities are now available in incorporation with the **Svensson Markspelle Ups & Downs** fabric collection.

These operations extend with side pull operation using a step-down gear (planetary gear) and even heavy draperies can be moved with ease. Especially the problem "complete darkening" was solved perfectly with this roller system. All aluminium profiles are fitted with additional seals that house the Svensson Markspelle 'Silhouette' fabric and the result is complete darkening.

Quadro- the new universal - **SUNDRAPE AUSTRALASIA** roller blind.

Web address: www.sundrape.com.au
Correspondence at info@sundrape.com.au
Telephone (toll free) 1800 668868



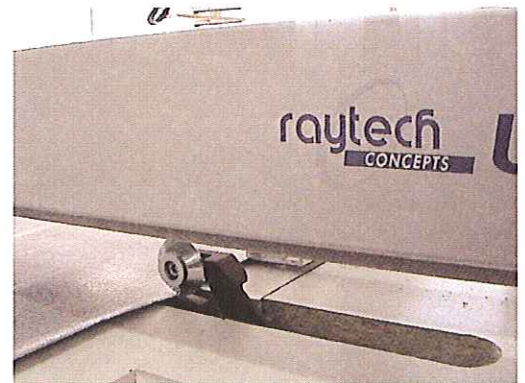
Sydney based specialist marine interior designers - **SPEAR GREEN DESIGN**, specified Svensson Markspelle 'Boule' fabrics in 2 colourways when they designed and specified business class lounges on board the ferries Spirit of Tasmania I & II. The seats were constructed by marine seating contractors Beurteaux, of WA. The fabric was air freighted from Sweden to make the tight fabrication schedule. SGD required a sumptuous, long wearing and fireproof substrate for these fully reclining leather trimmed business class seats. These lounges have been well used since completion of the project.
(02) 9518 8222



At DesignEx, Chris Hart of Brisbane based machine builder '**RAYTECH CONCEPTS**' requested samples to test the hi-tech Svensson blind Fabrics on their Ultra 3000 cutting tables. Four fabrics were cut using ultrasonic cutting and a specially designed pressure cutter.

3 metalised fabrics and one CS Trevira were cut and then inspected with a 40 times magnification viewing scope. The results were as follows: Recommended cutting was Ultrasonic to avoid frays. **Raytech's** tests confirmed ultrasonic cut the fabrics adequately but require specific settings and cutting tools plus operator knowledge of this sophisticated fabric. Pressure cutting produced a significantly better edge using the **Raytech** machine; being less burred and significantly cleaner. The pressure cutter had the added advantage of being 5 times faster according to **Raytech** MD Chris Hart. Chris further commented that their less expensive Ultra 1000 Crush Cutter would achieve a similar result.

RAYTECH is happy to answer any questions relating to the cutting of this fabric by calling (07) 3276.8166



NEW DEVELOPMENTS

SPEAR GREEN'S Jeremy Spear (naval architect) and **Svensson's** Peter Maxwell-Mahon are currently working on a blind system suitable for the marine industry using both the aluminium and CS Trevira fabrics. The reduction of heating/cooling requirements would see significant savings in the operation of a vessels gen set.