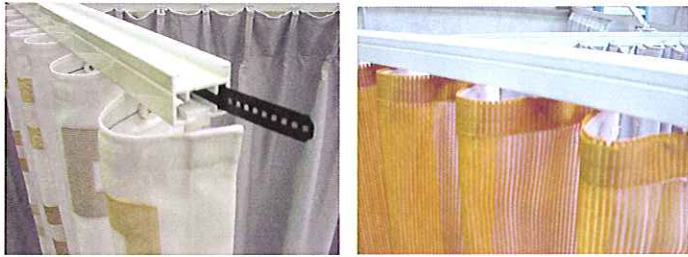


# UPS & DOWNS NEWS

svensson  
markspelle



## Sundrapes' Sunfold System

Regular contributor to the newsletter Sundrapes Murray Smith has launched a serpentine curtain track system. "Sunfold" curtain tracks by Wohntex, which has used Svensson Trevera CS to create something quite special. The photo above shows the results. The waveform heading gave a new dimension to the Svensson curtaining. This system gave a uniform wave shape from floor to ceiling adding to the already sophisticated look of the Svensson fabric.

Murray Smith was quite excited about the possibilities this system can offer his clients. The system offers:

Diverse track operation within one system (hand pull, chain operation, motorised)

Straight 1-15mm, curved angles, radius curved, multiple forms recess ceiling trim, top face fixing

Trevera CS fabrics from Svensson offers curtains that are allergy free and flame retardant.

The combination of these two products offers Architects, Decorators and Designers a stylish and energy saving window treatment. Murray says he would welcome any enquiry to discuss the benefits of using the "Sunfold System"

Murray can be contacted on: Email: [info@sundrape.com.au](mailto:info@sundrape.com.au)  
Ph (toll free) 1800 668868



Energy saving with the view

## DOMESTIC HEAT SAVINGS

Forest views - **Ombra** was installed on the east and north windows to help reduce the heat loss by up to 96%. The owners say the home is more comfortable and it has created a sophisticated and stylish look for this room. In summer, the view will be retained with 48% solar reflection and cooler internal temperatures.

On the west window, design **Mood** is installed to give up to 130% insulation improvement and more importantly, up to 66% summer reflection to reduce the solar heat load coming into the room.

## EUROPEAN STYLE AND QUALITY CURTAINS AND BLINDS FOR DOMESTIC AND COMMERCIAL USE IN TREVIRA CS. THE DESIGN SHOWN IS 'SQUARES' USED WITH THE BLINDS FOR DESIGN AND FUNCTION FOR A SYDNEY NORTH SHORE HOME

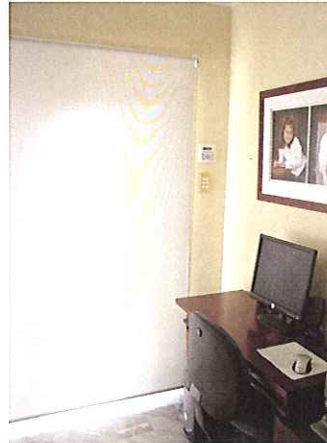


## COMPUTER BLINDS & THE SUN

The sun sends us 1000w<sup>m</sup> of light and the recommended light for computers is 200w<sup>m</sup>.

This home used **Optic** to reduce the sun's glare by 95%, allowing the computer to be used at any time of the day.

This fabric has applications for both commercial and domestic.



FROM OUTSIDE - You can't see in

The foyer at **VENUS BLINDS** had a huge heat problem in summer from the western sun and reflection from the concrete drive.

By replacing the blinds with **Grey Ombra** aluminium fabric, 43% of the sun is now reflected back out, drastically reducing the internal heat load.

During the day from outside, you can't see in, but from inside you can see out. The staff loves this effect and visitors all comment on the difference the **Ombra** has made



FROM INSIDE -you can see out

## NEW DEVELOPMENTS

Solar Loads (g) and thermal losses (U) statistics are available from parasol on [www.livingshade.com.au](http://www.livingshade.com.au) and navigate to 'Internal Blinds'.